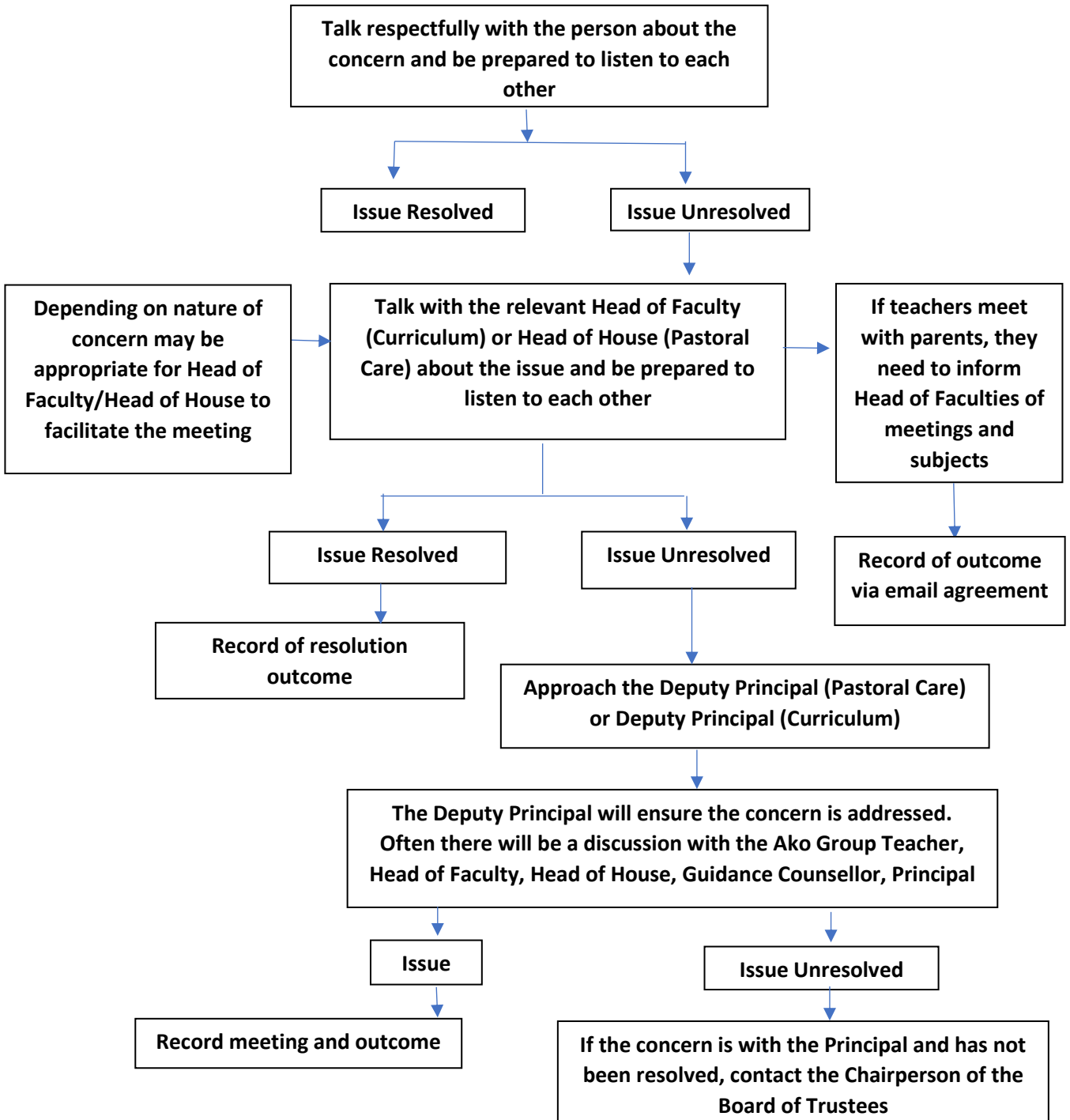




### What do I do if I have a concern?

This is for any member of staff, parents, whānau and students



**Note:**

1. In, general, where there is a concern with any staff member you should in the first instance discuss the issue with that person.
2. It is school policy for all staff to respond in a timely manner to parental concerns and provide feedback on any actions.
3. Principle of natural justice will be applied in any investigations undertaken.